

PRODUCT INFORMATION PACKET

Model No: 145T11TCR60007A1

Catalog No: E462A

1 HP Severe Duty Motor, 3 phase, 1200 RPM, 230/460 V, 145T Frame, TENV

Other Severe Duty Motors



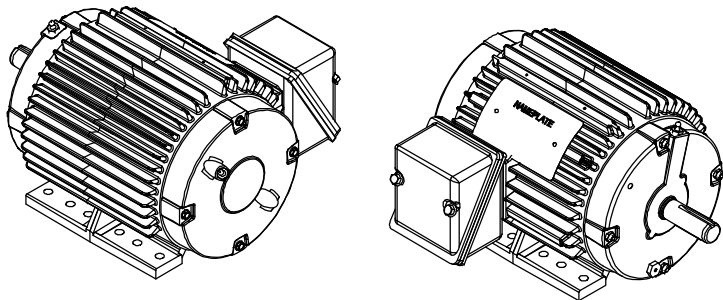
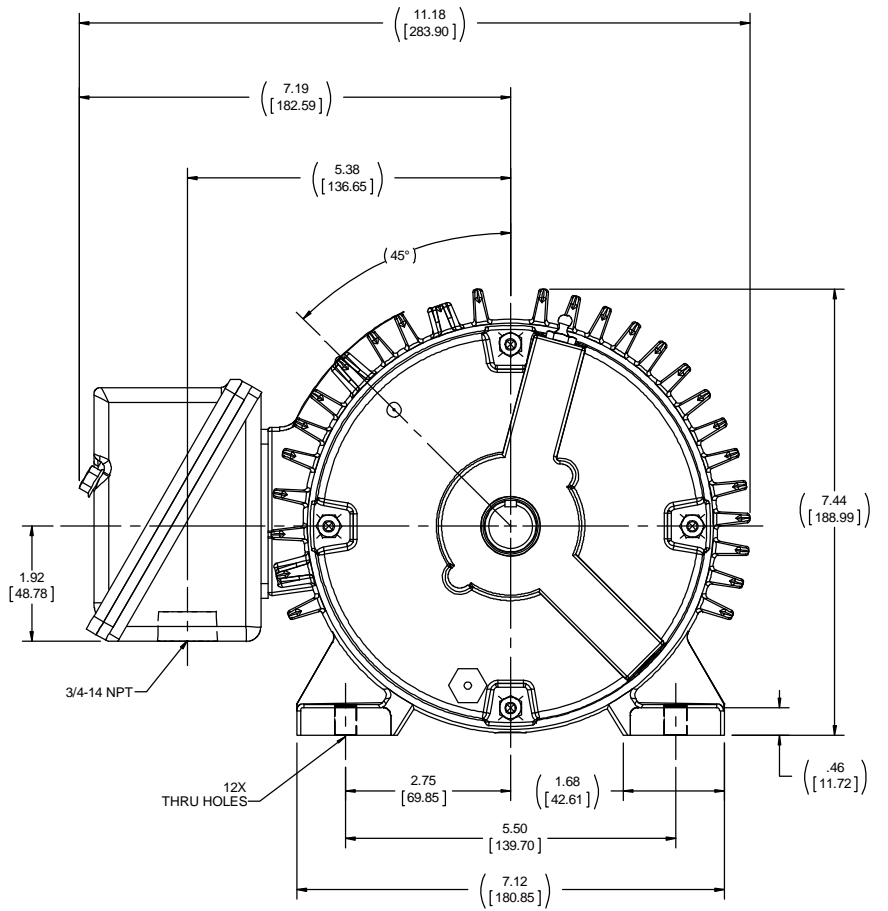
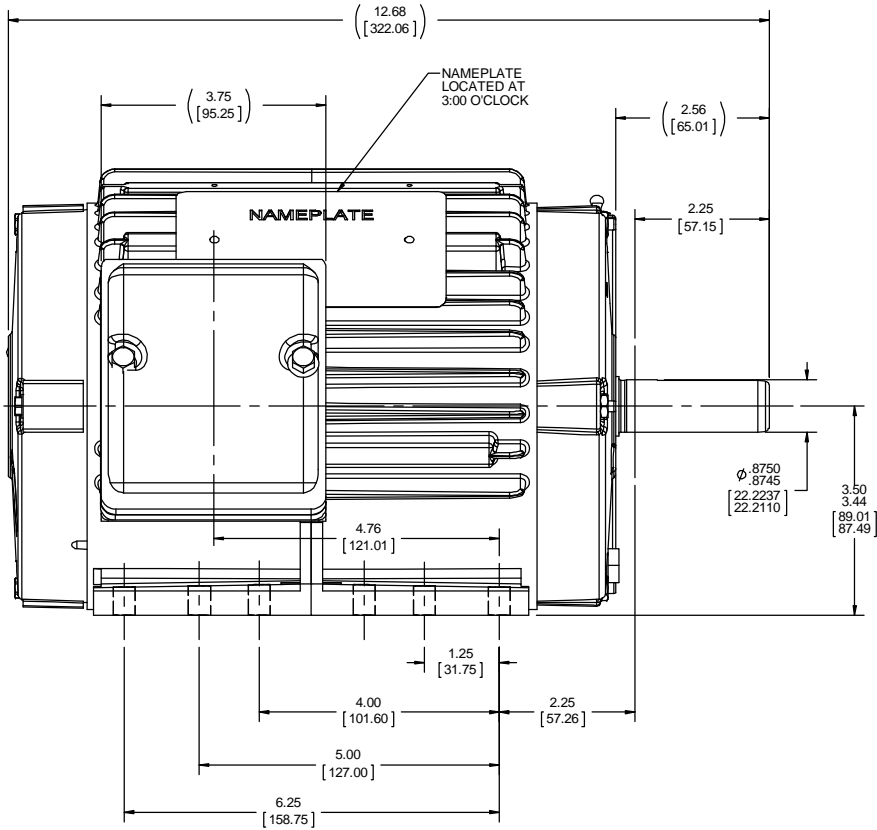
Nameplate Specifications


Output HP	1 Hp	Output KW	0.75 kW
Frequency	60 Hz	Voltage	230/460 V
Current	3.6/1.8 A	Speed	1150 rpm
Service Factor	1.15	Phase	3
Efficiency	82.5 %	Power Factor	63
Duty	Continuous	Insulation Class	F
Design Code	B	KVA Code	J
Frame	145T	Enclosure	Totally Enclosed Non Ventilated
Thermal Protection	No	Ambient Temperature	40 °C
Drive End Bearing Size	6205	Opp Drive End Bearing Size	6203
UL	Recognized	CSA	Y
CE	Y	IP Code	54
Hazardous Location	DIVISION 2 T2B		

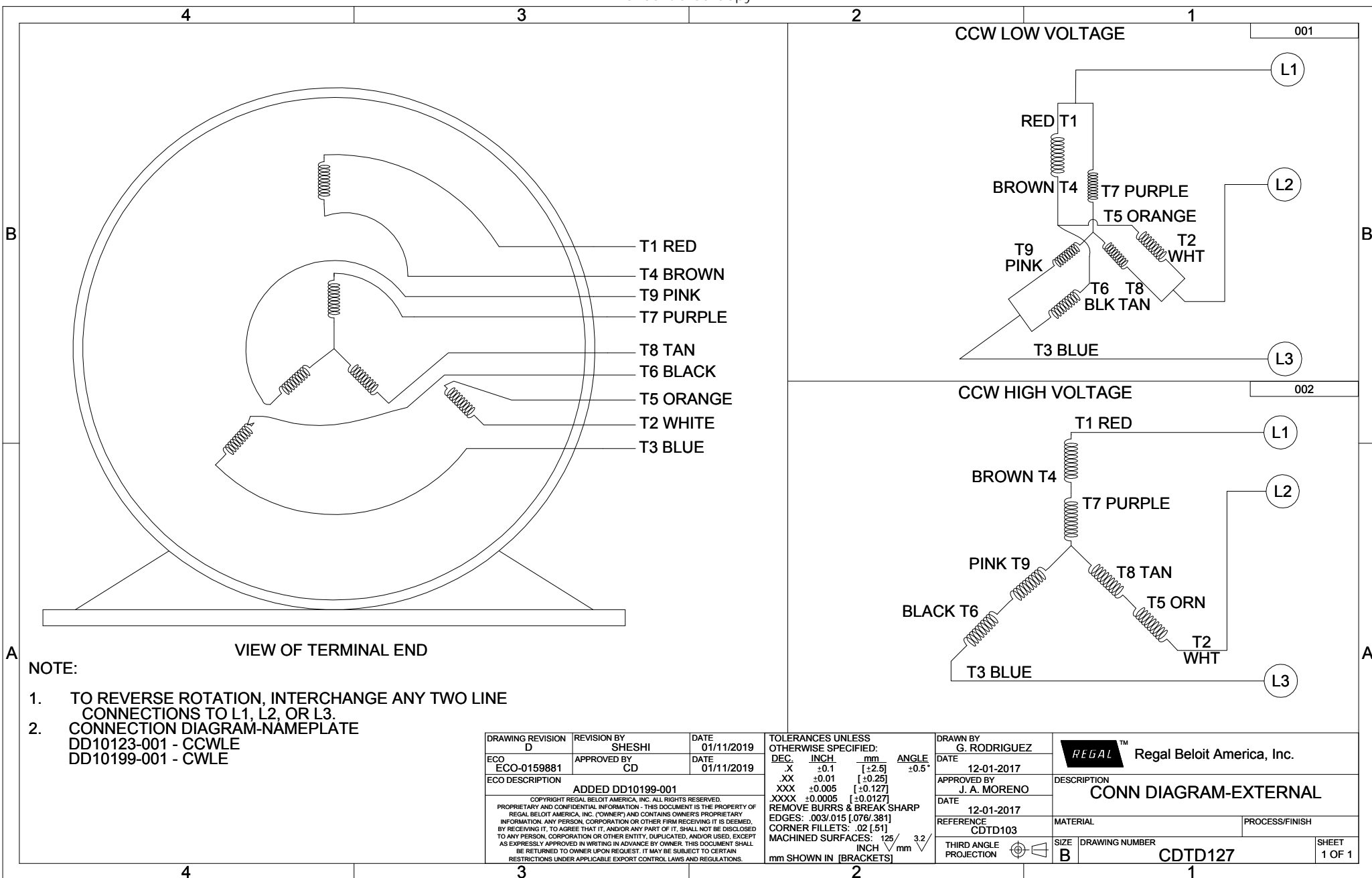
Technical Specifications

Electrical Type	Squirrel Cage Inverter Rated	Starting Method	Line Or Inverter
Poles	6	Rotation	Reversible
Resistance Main	0 Ohms	Mounting	Rigid base
Motor Orientation	Horizontal	Drive End Bearing	Ball
Opp Drive End Bearing	Ball	Frame Material	Cast Iron
Shaft Type	T	Shaft Diameter	0.875 in
Assembly/Box Mounting	F1/F2 CAPABLE		
Outline Drawing	OL56100504-001	Connection Drawing	CDTD127

This is an uncontrolled document once printed or downloaded and is subject to change without notice. Date Created:18/06/2020



DRAWING REVISION A	REVISION BY	DATE	TOLERANCES UNLESS OTHERWISE SPECIFIED: DEC. INCH mm ANGLE	DRAWN BY D. SURYAWANSHI	 Regal Beloit America, Inc.
ECO-0143359	APPROVED BY	DATE	.XX ±0.1 [2.5] 0.5° .XXX ±0.02 [0.51] .XXXX ±0.005 [0.127] .XXXX ±0.0005 [±0.0127]	DATE 07/26/2018	
ECO DESCRIPTION NEW MODEL RELEASE			REMOVE BURRS & BREAK SHARP EDGES: .003/.015 [076/.381] X 45° CORNER FILLETS: R.02 [.51]	APPROVED BY PVR	DESCRIPTION OUTLINE
<small>COPYRIGHT REGAL BELOIT AMERICA, INC. ALL RIGHTS RESERVED. PROPRIETARY AND CONFIDENTIAL INFORMATION. THIS DOCUMENT IS THE PROPERTY OF REGAL BELOIT AMERICA, INC. FORMERLY AND CONTAINS OWNERS PROPRIETARY INFORMATION. ANY PERSON, CORPORATION OR OTHER FIRM RECEIVING IT IS DEEMED BY RECEIVING IT, TO AGREE THAT IT, AND/OR ANY PART OF IT, SHALL NOT BE DISCLOSED TO ANY PERSON, CORPORATION OR OTHER ENTITY, DUPLICATED, AND/OR USED, EXCEPT AS EXPRESSLY APPROVED IN WRITING IN ADVANCE BY OWNER. THIS DOCUMENT SHALL BE RETURNED TO OWNER UPON REQUEST. IT MAY BE SUBJECT TO CERTAIN RESTRICTIONS UNDER APPLICABLE EXPORT CONTROL LAWS AND REGULATIONS.</small>			MACHINED SURFACES: .125 / 3.2 INCH/ mm SHOWN IN (BRACKETS)	DATE 07/26/2018	140FR,TENV,RIGID,3-PHASE
				REFERENCE OL56100504	MATERIAL
				THIRD ANGLE PROJECTION	PROCESS/FINISH
				SIZE C	DRAWING NUMBER OL56100504-001
					SHEET 1 OF 1



VIEW OF TERMINAL END

- NOTE:
1. TO REVERSE ROTATION, INTERCHANGE ANY TWO LINE CONNECTIONS TO L1, L2, OR L3.
 2. CONNECTION DIAGRAM-NAMEPLATE DD10123-001 - CCWLE DD10199-001 - CWLE

DRAWING REVISION D	REVISION BY SHESHI	DATE 01/11/2019	TOLERANCES UNLESS OTHERWISE SPECIFIED:		DRAWN BY G. RODRIGUEZ	Regal Beloit America, Inc.			
ECO ECO-0159881	APPROVED BY CD	DATE 01/11/2019	DEC. INCH mm ANGLE	±0.5°	DATE 12-01-2017				
ECO DESCRIPTION ADDED DD10199-001			.X ±0.1 [+2.5]		APPROVED BY J. A. MORENO	DESCRIPTION CONN DIAGRAM-EXTERNAL			
<small>COPYRIGHT REGAL BELOIT AMERICA, INC. ALL RIGHTS RESERVED. PROPRIETARY AND CONFIDENTIAL INFORMATION - THIS DOCUMENT IS THE PROPERTY OF REGAL BELOIT AMERICA, INC. (OWNER) AND CONTAINS OWNERS PROPRIETARY INFORMATION. ANY PERSON, CORPORATION OR OTHER FIRM RECEIVING IT IS DEEMED, BY RECEIVING IT, TO AGREE THAT IT, AND/OR ANY PART OF IT, SHALL NOT BE DISCLOSED TO ANY PERSON, CORPORATION OR OTHER ENTITY, DUPLICATED, AND/OR USED, EXCEPT AS EXPRESSLY APPROVED IN WRITING IN ADVANCE BY OWNER. THIS DOCUMENT SHALL BE RETURNED TO OWNER UPON REQUEST. IT MAY BE SUBJECT TO CERTAIN RESTRICTIONS UNDER APPLICABLE EXPORT CONTROL LAWS AND REGULATIONS.</small>			.XX ±0.01 [+0.25] .XXX ±0.005 [+0.127] .XXXX ±0.0005 [+0.0127]		DATE 12-01-2017	MATERIAL	PROCESS/FINISH		
			REMOVE BURRS & BREAK SHARP EDGES: .003/.015 [.076/.381]		REFERENCE CDTD103	THIRD ANGLE PROJECTION	SIZE B	DRAWING NUMBER CDTD127	SHEET 1 OF 1
			CORNER FILLETS: .02 [.51]						
			MACHINED SURFACES: 125/3.2						
			mm SHOWN IN [BRACKETS]						



Uncontrolled Copy

CERTIFICATION DATA SHEET

P.O. BOX 8003
WAUSAU, WI 54401-8003
PH. 715-675-3311

CONN. DIAGRAM: CDTD127

MODEL #: 145T11TCR60007A1 A

OUTLINE: OL56100504-001

MOUNTING: F1/F2 CAPABLE

WINDING #: ZT6152 3

TYPICAL MOTOR PERFORMANCE DATA

HP	KW	SYNC. RPM	F.L. RPM	FRAME	ENCLOSURE	KVA CODE	DESIGN	
1	0.75	1200	1150	145T	TENV	J	B	
PH	Hz	VOLTS	AMPS	START TYPE	DUTY	INSL	S.F.	AMB°C
3	60	230/460	3.6/1.8	LINE OR INVERTER	CONTINUOUS	F2	1.15	40

FULL LOAD EFF:	82.5	3/4 LOAD EFF:	82.5	1/2 LOAD EFF:	81.5	GTD. EFF	80	ELEC. TYPE	
FULL LOAD PF:	63	3/4 LOAD PF:	53.2	1/2 LOAD PF:	41.1				SQ CAGE INV RATED

F.L. TORQUE	LOCKED ROTOR AMPS	L.R. TORQUE	B.D. TORQUE	F.L. RISE°C
4.5 LB-FT	20 / 10	12.45 LB-FT	226 %	16.25 LB-FT
				295 %
				40

SOUND PRESSURE @ 3 FT.	SOUND POWER	ROTOR WK^2	MAX. WK^2	SAFE STALL TIME	STARTS / HOUR	APPROX. MOTOR WGT
58 DBA	68 DBA	0.14 LB-FT^2	- LB-FT^2	- SEC.	-	0 LBS.

*** SUPPLEMENTAL INFORMATION ***

DE BRACKET TYPE	ODE BRACKET TYPE	MOUNT TYPE	ORIENTATION	SEVERE DUTY	HAZARDOUS LOCATION	DRIP COVER	SCREENS	PAINT
STANDARD	STANDARD	RIGID	HORIZONTAL	PREMIUM SEVERE DUTY	DIVISION 2 TZB	FALSE	NONE	BLUE (POWDER)

BEARINGS		GREASE	SHAFT TYPE	SPECIAL DE	SPECIAL ODE	SHAFT MATERIAL	FRAME MATERIAL
DE	ODE						
BALL	BALL	POLYREX EM	T	NONE	NONE	AISI 1215 (NS1000)	CAST IRON
6205	6203						

THERMO-PROTECTORS						THERMISTORS	CONTROL	SPACE HEATERS
THERMOSTATS	PROTECTORS	WDG RTDS	BRG RTDS			NONE	FALSE	NONE
NONE	NOT	NONE	NONE	NONE	NONE	NONE	NONE	NONE

INVERTER TORQUE: CONSTANT 10:1
INV. HP SPEED RANGE: 1.5 X BASE SPEED

ENCODER: NONE
NONE NONE
NONE NONE PPR

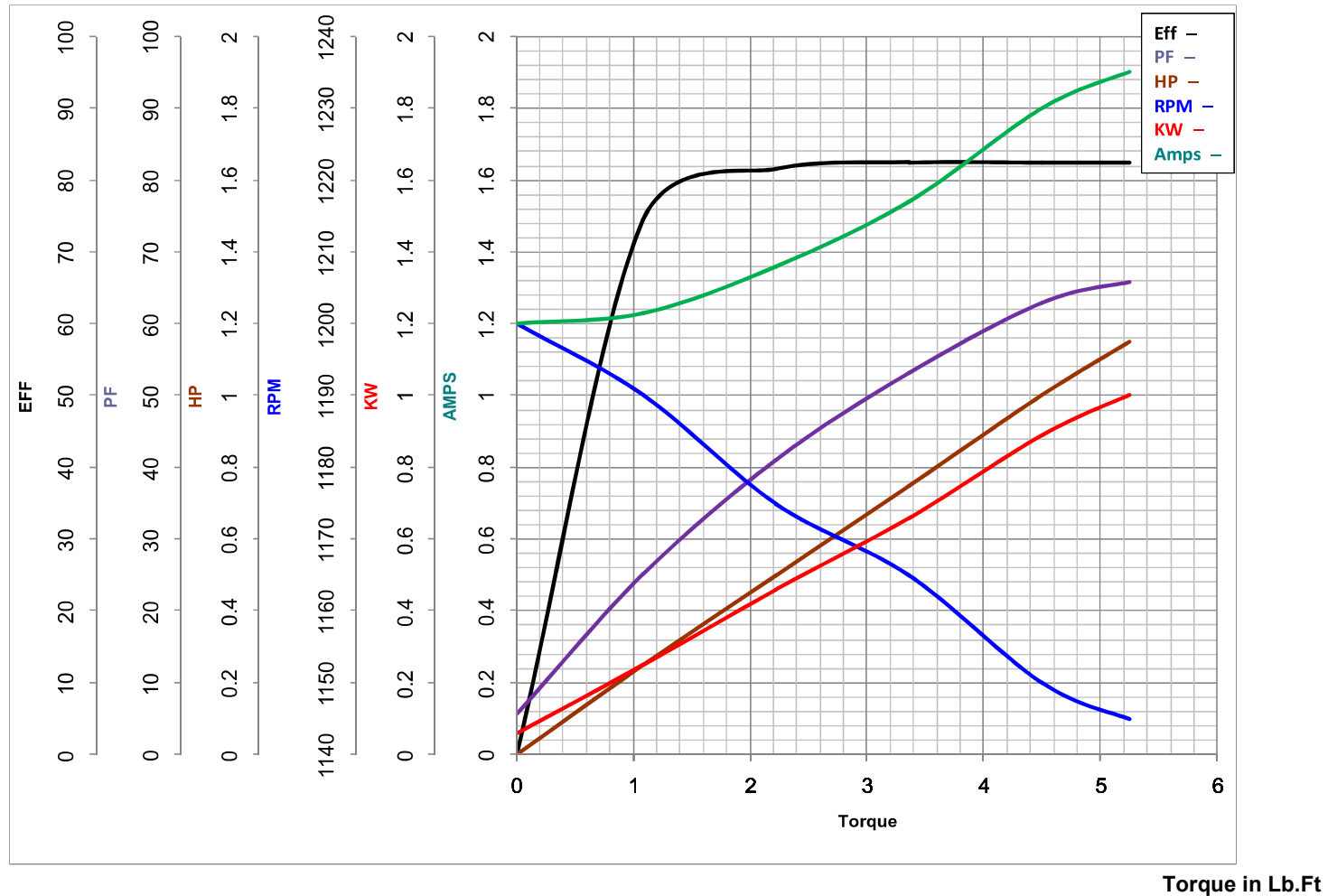
BRAKE: NONE NONE
NONE P/N NONE
NONE NONE
NONE FT-LB NONE V NONE HZ

*
N
O
T
E
S

MARATHON ELECTRIC CORPORATION

TYPICAL PERFORMANCE CURVE for AC MOTOR

Customer _____ Curve at 460 Volts HP 1.00 PHASE 3
 Model No 145T11TCR60007A1 60 HZ
1 HP VOLTS 230/460
 Catalog No E462A HZ 60 RPM 1150



FL TORQUE	<u>4.5</u>	Lb.Ft	FL AMPS	<u>3.6/1.8</u>	
BD TORQUE	<u>16.3</u>	Lb.Ft	PU TORQUE	<u>12.1</u>	Lb.Ft
LR TORQUE	<u>12.45</u>	Lb.Ft	LR AMPS	<u>10</u>	
WINDING	ZT6152-3	Prepared By	ANUSHA.M	Date	11/5/2018